



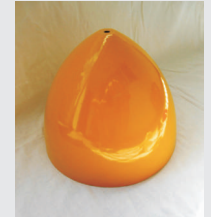
**Metal spinning**  
**CNC plasma cutting**  
**Bending, welding**  
**Powder coating, metalworking**

Metal spinning of steel, aluminium, copper, brass parts from 0,5mm to 4mm and diameter from 50mm to 500mm with Leifeld hydraulic spinning machine.

Precise plasma cutting of metal parts from 1 mm to 12 mm, working area: 2000x1000mm. Bending and welding. Powder coating, oven dimensions: 1200x2000x1000mm.

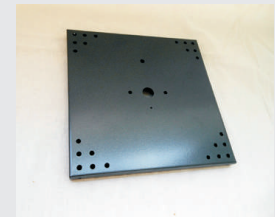
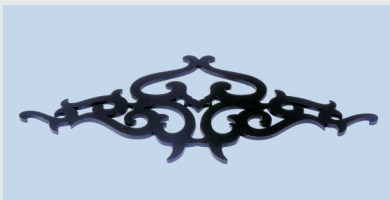
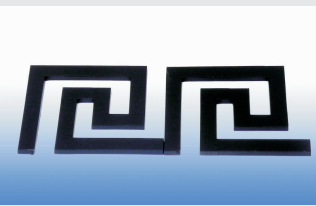
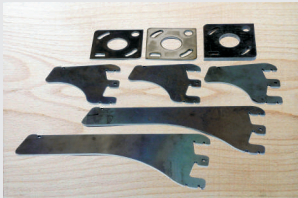
**Manual spinning**

**Machine spinning**



**Precise plasma cutting**

**Metal boxes and parts**





**Renesse Ltd**

Metal spinning, metal working

**Office:**

1345 Sofia,  
Kukush Str. 62, E, 97  
mob.tel.: **0888 98 20 39**  
e-mail: pazod@yahoo.com

**Production:**

2210 Dragoman,  
Stozaj  
<http://www.renessebgb.eu>

**Hypertherm**

*Cut with confidence*

**Hypertherm**

*Cut with confidence*